

CERTIFIED LAND CORNER RECORDATION

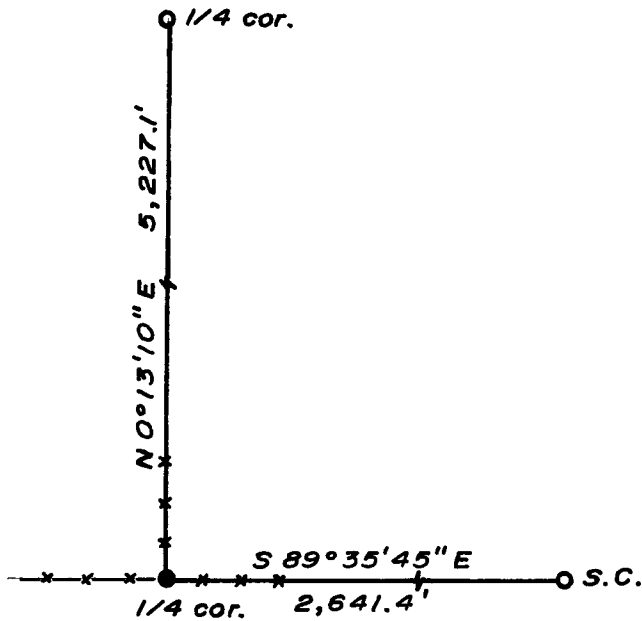
DESCRIPTION OF CORNER EVIDENCE FOUND, AND ORIGINAL RECORD (If known)

LOCATION Found 6" x 9" Granite stone with "1/4" on north face.
 1/4 S.28 G.L.O. record - Granite boulder, 20 x 14 x 10. [John B. Thomas, 1872]
 1/4 S.33
 T.17N., R.70W.
 6th P.M.

DESCRIPTION OF MONUMENT AND ACCESSORIES ESTABLISHED TO PERPETUATE THE ORIGINAL LOCATION OF THIS CORNER:

At the corner: Set a 1 1/2" dia. x 30" long iron pipe with brass cap.
 Accessories: Left stone as memorial.

SKETCH, WITH COURSE AND DISTANCE TO ADJACENT CORNER IF DETERMINED IN THIS SURVEY.
 (May Sketch or Paste Reproduction on Reverse Side.)



Brass cap set 6" above ground.
 Brass cap stamped:
 T.17N. R.70W.
 1/4 S.28
 1/4 S.33
 LS 519 1975

I, R.L. Hudson certify that I have carefully performed or reviewed the work done on the diagrammed corner as reported on this recordation form and approve the same.

R.L. Hudson Wyoming L.S. No. 519
 Signature of Surveyor Registration No.

STATE OF WYOMING,
 Office of Clerk and Recorder,
 County of Taramie

This "corner record" was filed for record on the 20 day of August, 1975, was noted on the cross-index plat and is assigned page No. _____, in book No. _____.

Janet C. Whitehead
 County Official

Cross Index No. <u>4-11</u>	T. <u>17</u>	R. <u>70</u>	Mer.
<u>W-11</u>	T. <u>17</u>	R. <u>70</u>	Mer.
_____	T. _____	R. _____	Mer.
_____	T. _____	R. _____	Mer.
_____	T. _____	R. _____	Mer.
_____	T. _____	R. _____	Mer.
_____	T. _____	R. _____	Mer.

State of Wyoming }
County of Laramie } SS

This instrument was filed for record
at 2:10 o'clock P M on the
22 day of August
A. D. 19 77 and duly recorded in
book _____ on page _____

James C. Whithead

County Clerk & Ex-Officio Register at Deeds
By _____ Deputy